

DIMENSIONS:

ALL DIMENSIONS IN MILLIMETERS
+/- 10mm TOLERANCE ON ALL DIMENSIONS

CONCRETE:

STANDARD
STANDARD ACC-(ACCELERATED STRIPPING)
10MPa STRIPPING STRENGTH
35 MPa @ 28 DAYS
C-1 EXPOSURE CLASS
6.7 CUBIC YARDS(TANK)
1.9 CUBIC YARDS(LID)
SULPHATE RESISTANT

REINFORCEMENT:

ALL REINF. HAS MIN. 25mm OF COVER

TANK:

10M @ 300mm O/C E/W

LID:

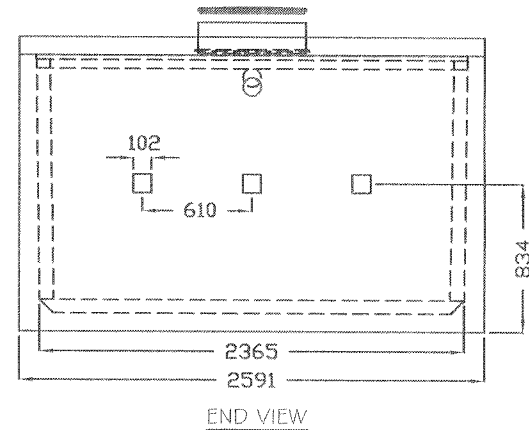
10M @ 300mm O/C E/W
CORNER BARS AROUND RISERS

WEIGHT:

LID APPROX. 9532 LBS/4333 KG
TANK APPROX. 21784 LBS/9902 KG
ASSEMBLED APPROX 31316 LBS/ 14235 KG

NOTES:

DIVIDER WALL IS MONOLITHIC CAST
JOINT SEALANT IS MASTIC SEALANT (CONSEAL CS-102)
TANK ASSEMBLED ON SITE
SEE INSTRUCTIONS FOR ASSEMBLY PROCEDURES
1.5M MAXIMUM BURIAL
INLET AND OUTLET ARE 4" POLYLOK PIPE SEALS
LIDS AND RISERS ARE 24" DIAMETER POLYLO K



58 COOPER ROAD
ROSSLYN, ONT.
Phone: (807) 939-2655
Fax: (807) 939-1788

PRODUCT

3000 GAL/ 13670 L SEPTIC TANK

JOB/PRODUCT CODE:

3000STPR

CONTRACTOR:

SCALE:

N.T.S

DATE	INI.	DESCRIPTION
SEPT 2013	DSM	ORIGINAL DRAWING