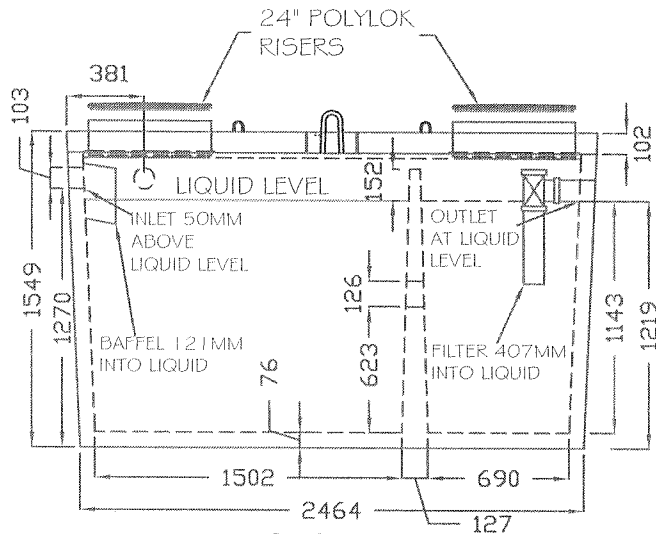
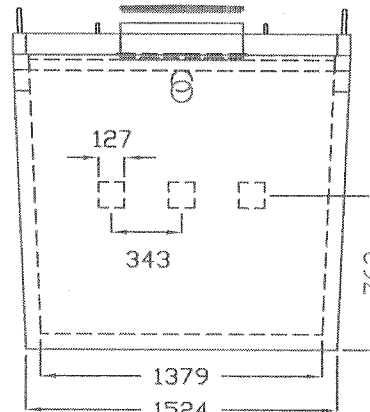


TOP VIEW



SIDE VIEW



END VIEW

DIMENSIONS:

ALL DIMENSIONS IN MILLIMETERS.

CONCRETE:

STANDARD
 STANDARD ACC +(ACCELERATED STRIPPING)
 10 MPa STRIPPING STRENGTH
 35 MPa @ 28 DAYS
 C-1 EXPOSURE CLASS
 1.7 CUBIC YARDS

REINFORCEMENT:

ALL REINF. HAS MIN. 25mm OF COVER

TANK:

WWF 6"x6" 6/6 (BOTTOM AND 36" OF SIDES)
 1 - 10M RING (TOP)
 4 - 10M VERTICALS (SIDES)

LID:

1 - 10M RING
 2 - 10M BARS LONG WAY
 4 - 10M BARS SHORT WAY

WEIGHT:

APPROX. 9645 LBS/4384 KG

NOTES:

USE 3/8" X 8 1/2" PURPLE LIFTERS ON LID
 DIVIDER WALL IS MONOLITHIC CAST
 JOINT SEALANT IS MASTIC SEALANT (CONSEAL CS-102)
 TANK ASSEMBLED IN FACTORY
 1.5M MAXIMUM BURIAL
 INLET AND OUTLET ARE 4" POLYLOK PIPE SEALS
 LIDS AND RISERS ARE 24" DIAMETER POLYLOK



58 COOPER ROAD
 ROSSLYN, ONT.
 Phone: (807) 939-2655
 Fax: (807) 939-1788

PRODUCT

800 GAL/ 3600 L SEPTIC TANK

JOB/PRODUCT CODE:

800STPR

CONTRACTOR:

SCALE:

N.T.S

DATE	INI.	DESCRIPTION
11/26/13	DSM	ORIGINAL DRAWING